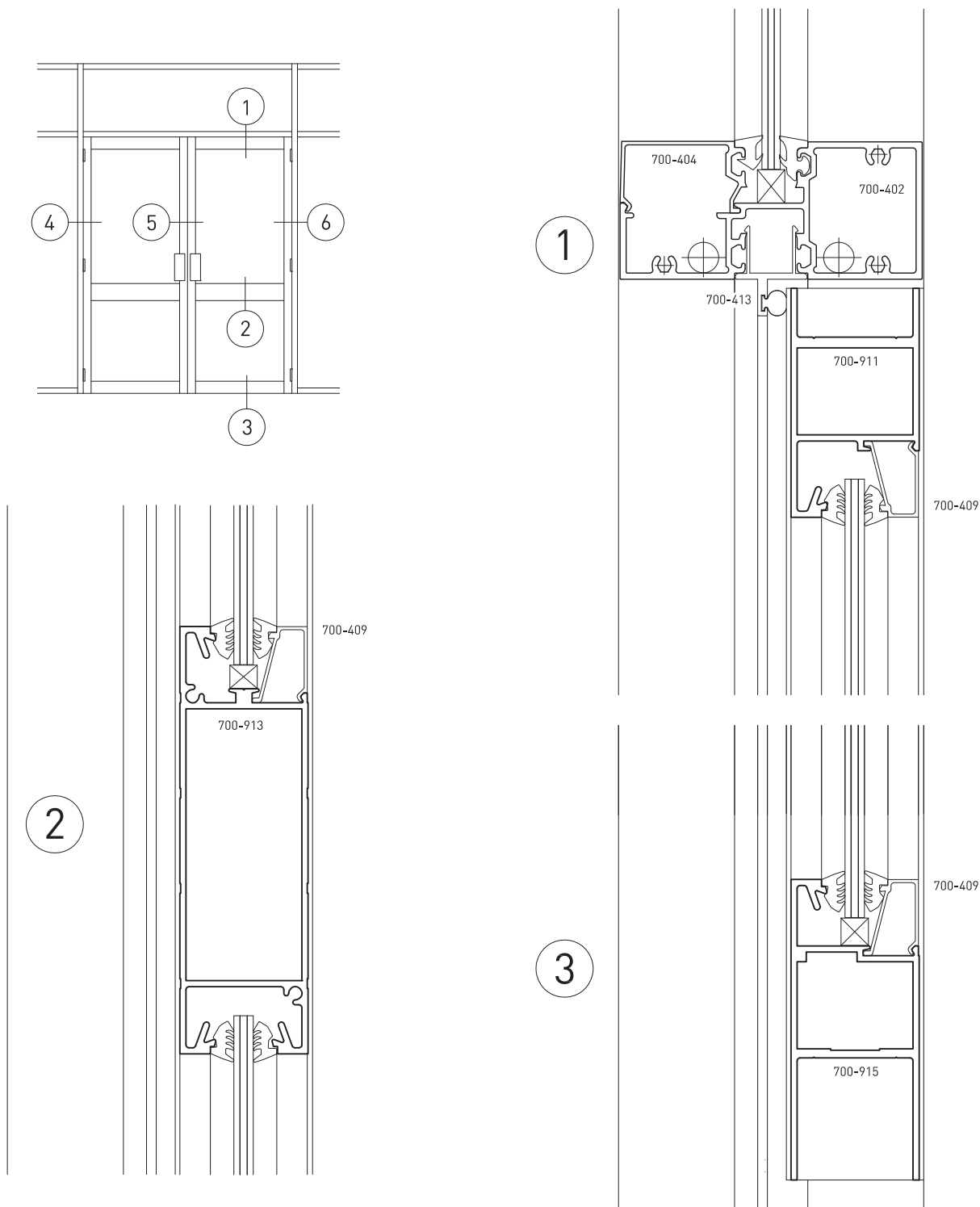


Typical Configurations



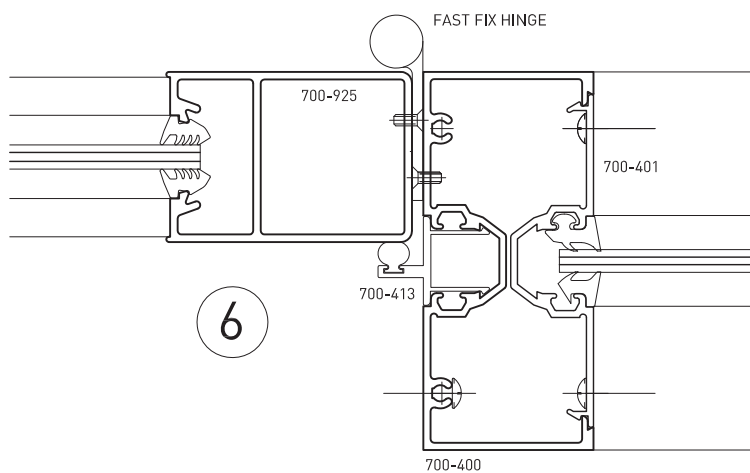
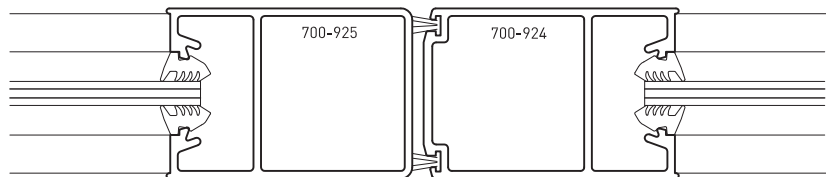
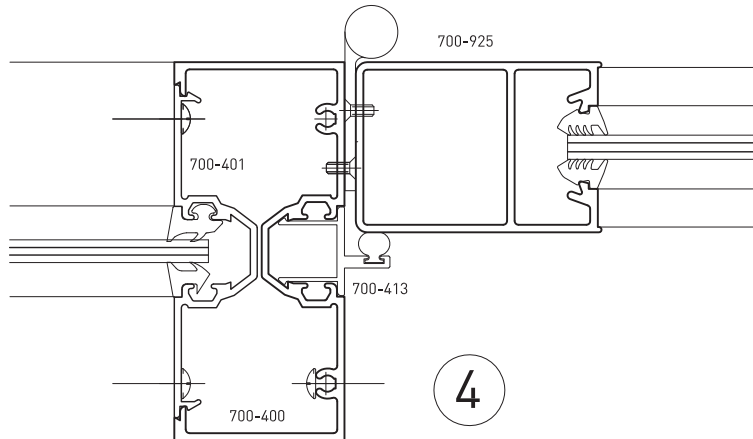
COMMERCIAL RANGE 717 SYSTEM

Emporia™ Pocket Glazed Door

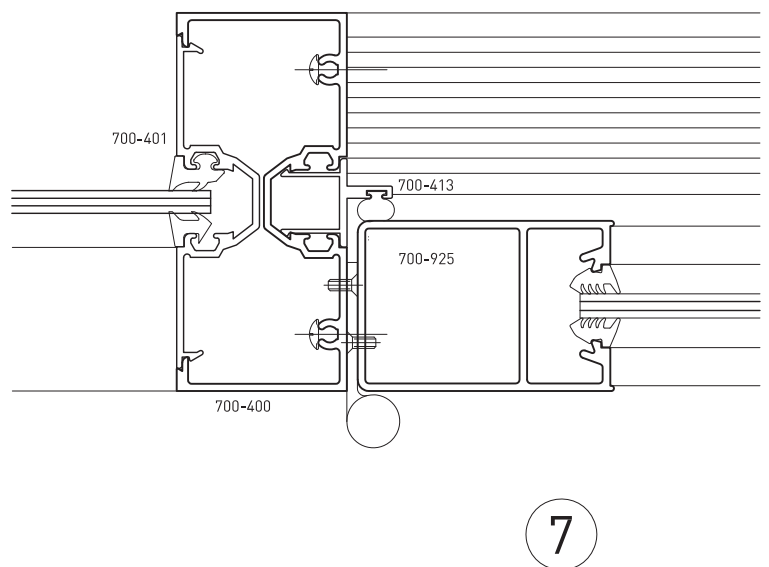
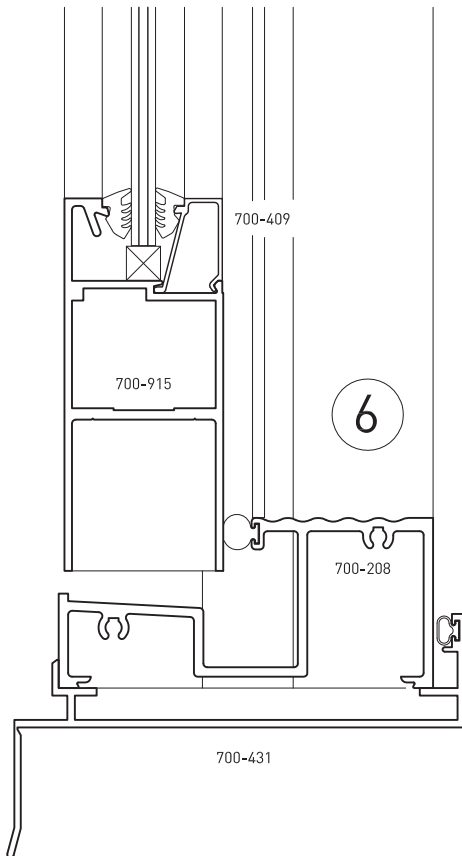
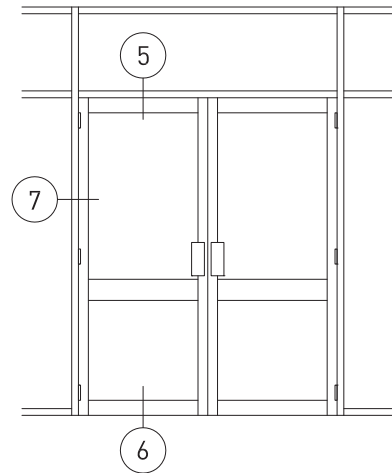
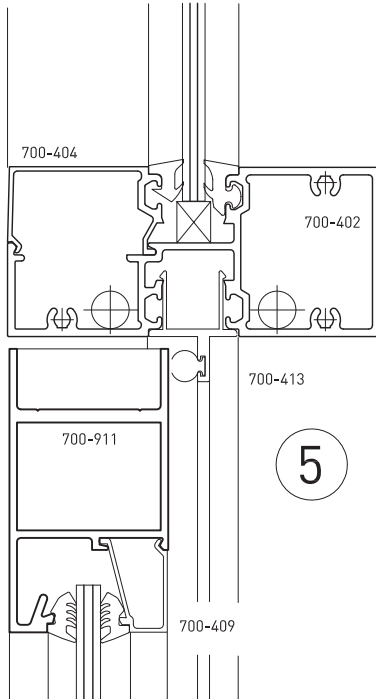


Date: Jan 2013
Replaces: Dec 2012

Typical Configurations



Typical Configurations



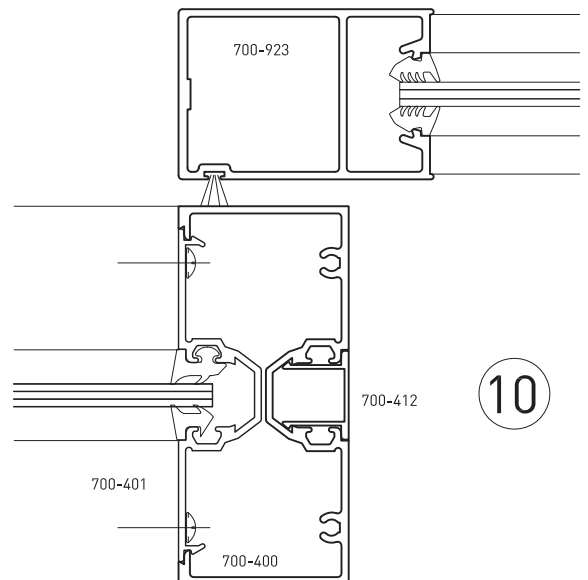
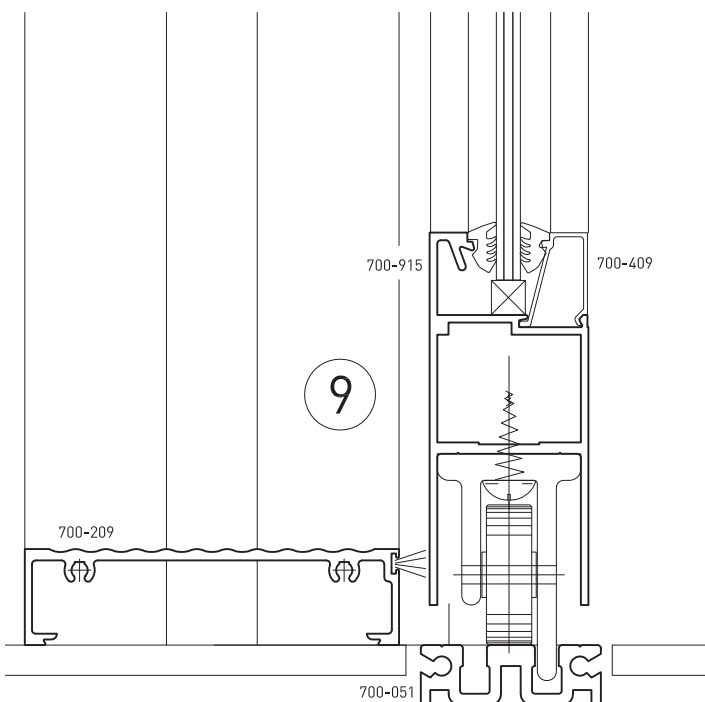
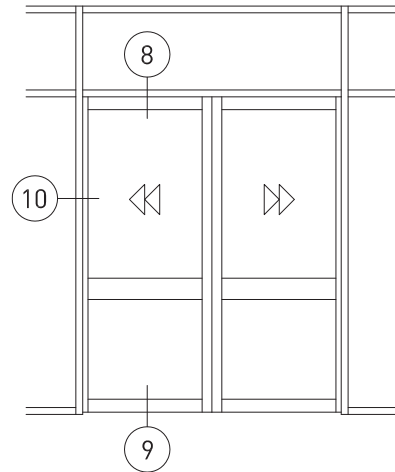
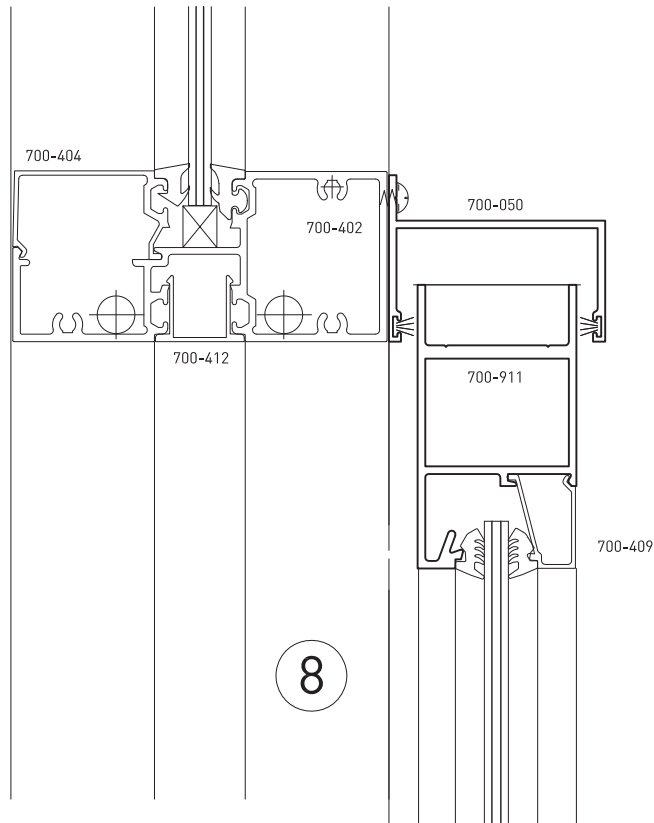
COMMERCIAL RANGE 717 SYSTEM

Emporia™ Pocket Glazed Door



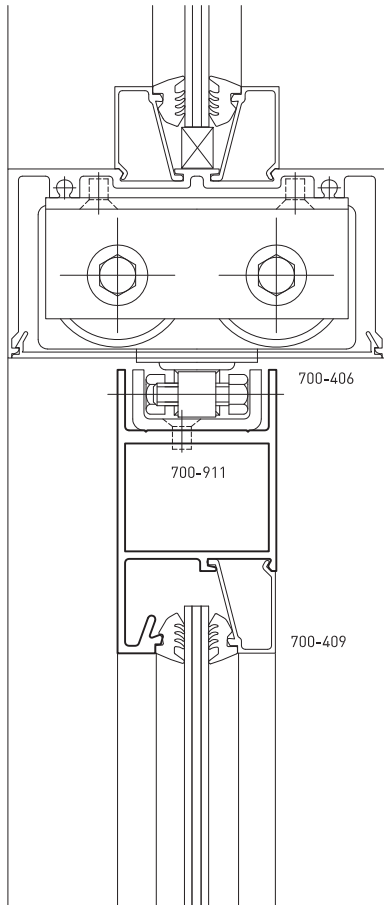
Date: Jan 2013
Replaces: Dec 2012

Typical Configurations



NOTE: USE BOTTOM ROLLER 01-243

Typical Configurations



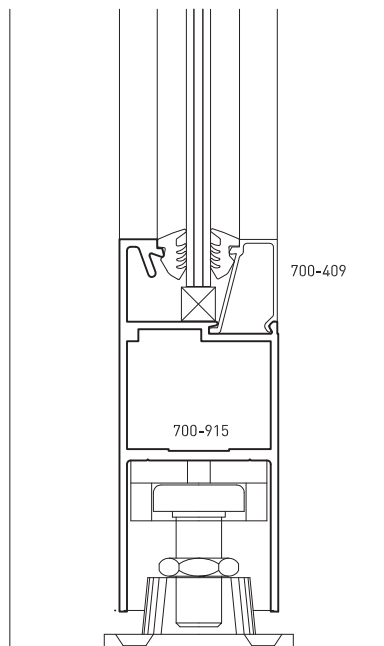
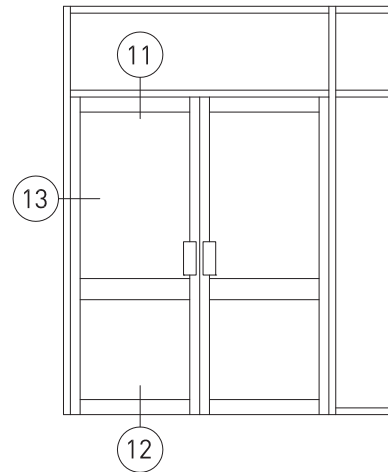
700-405

700-406

700-911

700-409

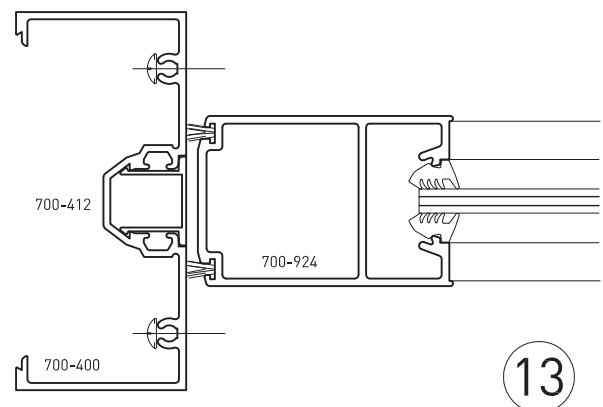
11



700-409

700-915

12



700-412

700-924

700-400

13

COMMERCIAL RANGE 717 SYSTEM

Emporia™ Pocket Glazed Door



Date: Jan 2013
Replaces: Dec 2012

Typical Configurations

