

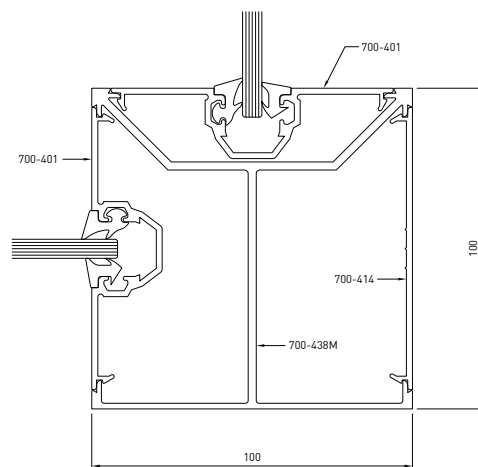
Technical Memo No. 100

Emporia™ 710 and 715 System 700-438M Corner Post

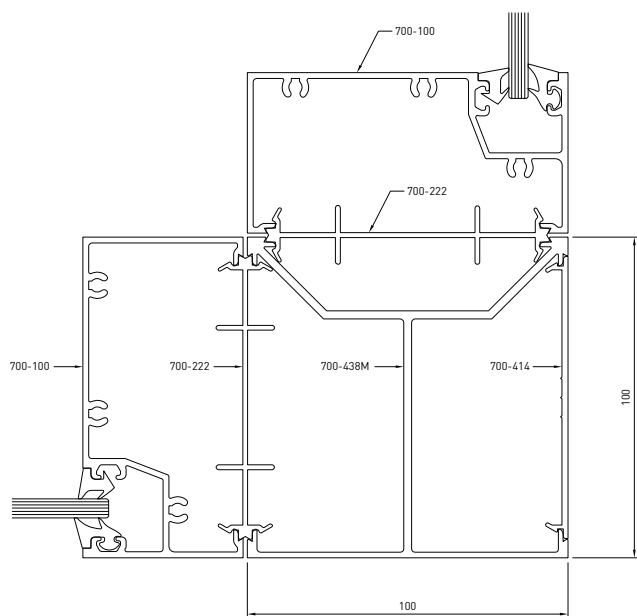
New Lidco Commercial Framing Section

Lidco is pleased to announce the release of a new three-way corner post for the Emporia™ 710 System Centre Glazed commercial framing. The new 700-438M section will allow both single and double glazing using a clever redesign of the section.

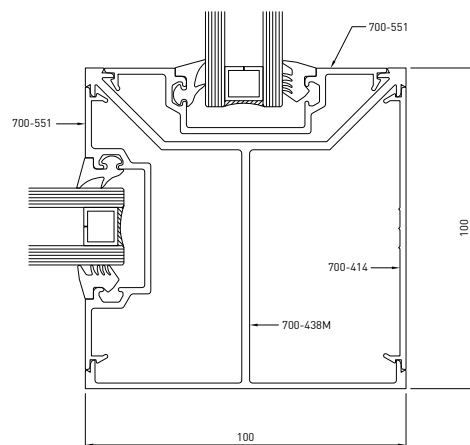
Using the 700-222 coupler, Lidco now offers the corner post section for the Emporia™ 715 System Face Glazed, something that has been missing with most face glazed systems. The 700-438M corner post avoids the use of unsightly folded aluminium pressings and the crisp lines of the new section will fit in with any architectural shopfront design. The section has been designed with reducing factory labour times in mind, making it a good value alternative.



Emporia™ 710 Single Glazed



715 Single Glazed



Emporia™ 710 Double Glazed