

## Technical Memo No. 99

### Klimat Airview Louvre™ Assembly Gaskets

#### Klimat Airview Louvre™ Assembly Gaskets

Lidco is pleased to announce the release of our new gasket sets for the Klimat – Airview Louvre™ framing. The gaskets suit the standard head and sill sections 600-720 and 600-701 respectively.

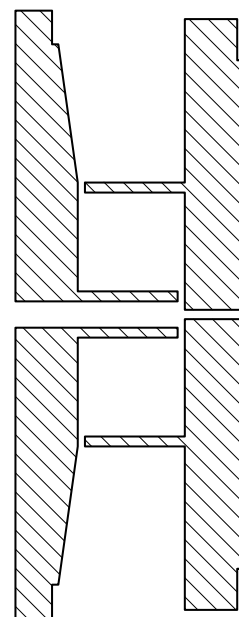
These gaskets are placed on the vertical jamb sections of the framing at the top and bottom and act as a seal between the two aluminium surfaces.

As with a lot of aluminium joinery if the sections are over tightened they slightly deform and if they are only relying on a small joint sealant, full contact with both surfaces is often lost. This deformation can cause water penetration.

Due to the shape of the section it is possible for water to build in the corners and sealant will fail more quickly than as expected.

Using foam gaskets avoids these problems and also overcomes the issue where assembly screws are over tightened and sections are deformed as gaskets tend to follow the shape of the extrusions.

Lidco has a full range of PVC foam tapes available to suit most of our popular suites.



Above: Klimat gasket set  
Below left: Klimat Airview Louvre™ detail  
Below: Klimat Airview Louvres™

