

# FRAMED

LIDCO QUARTERLY NEWSLETTER  
EDITION 5

HIGHLIGHTS  
AWA NATIONAL CONFERENCE

WHAT YOU NEED TO KNOW ABOUT  
NEW ENERGY RATINGS

FABRICATOR PROFILE  
TOTAL VISION GLASS

# MD's MESSAGE



"we are constantly looking towards creating more energy efficient systems"

Our attendance at the recent Australian Windows Conference in Adelaide, South Australia was very valuable and re-assuring. Apart from catching up with friends and colleagues, the big themes associated with energy performance very much resonated with what Lidco has already been doing for some time.

In particular, doubles glazing will increasingly become the most economical way of achieving the required energy ratings efficiencies and in this respect we are well positioned. Virtually all of our extensive framing systems come with a truly double glazing solution.

And by truly I mean not the typical double glazing adaptor 'clip on' that is both visually and structurally inferior but frames and sashes specifically designed and manufactured to take the double glazed integrated glass units (IGU). In many cases the IGU can be up to 25mm thick in both residential and commercial applications, more than enough to meet the current and likely future energy efficiency requirements.

We are proud to champion the importance of energy efficiency in our framing systems.

**Marco Belgiorno-Zegna AM**  
**Managing Director**

# LATEST NEWS

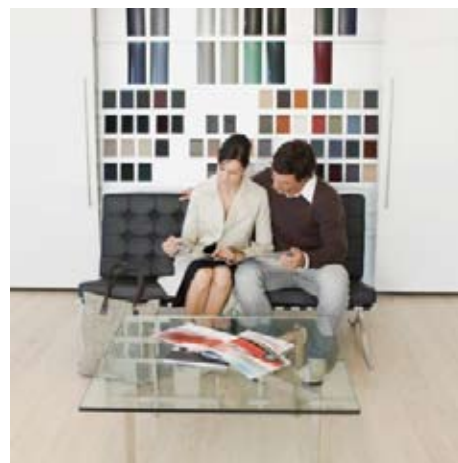
## ALEXANDRIA SHOWROOM

We are currently in the process of creating a new showroom at our head offices in Alexandria that will be open to architects, fabricators and the general public. It will comprise a variety of Lidco Systems, each highlighting the quality and versatility of the Lidco range.

Some of these different systems on offer will include the new 130 Stacking Door, the 140 Awning/Casement Window and the residential 150 Hinged Door System,

selected because of its energy efficient properties in residential applications. There will also be a range of louvres on display, as well as many others. Our technical team has been working closely with Total Vision Glass & Aluminium to create a showroom that caters for both residential & commercial needs.

On another note, we welcome Carrick Bruce to our Brisbane offices later this month.



## LIDCOMAKER NEWS

The latest edition of the LidcoMaker Newsletter will soon be released and will highlight the enhanced features that include:

- ▲ 40 character field for 'customer name'
- ▲ Improved filtering for 'select jobs'
- ▲ Frame size now reported on the production document
- ▲ Corner jam angled heads can be changed during order entry

In addition the LidcoMaker database has also been updated in the following areas:

- ▲ Removing old Lidco Systems
- ▲ Profile substitution
- ▲ Finish colour setup
- ▲ Pricing
- ▲ Hardware
- ▲ Revised warning and error messages
- ▲ New production report
- ▲ Upgrade to v.5-8

If you require assistance with LidcoMaker please contact:  
Chintan Shah  
Software Support Engineer  
02 8396 6033



# AWA CONFERENCE



By Neil Weatherstone  
National Sales & Marketing Manager

The AWA Conference covered a wide array of topics over the two day programme. On the initial day topics covered included, Australian Standards in the BCA, Section J in the BCA, what Certifiers look for, the needs of Energy Raters, Sustainability and Training. It was interesting to gain an insight into the perspective of a certifier and an energy rater with the proposed energy efficiency amendments likely to be finalised in December this year.

On day two, Tone Wheeler, an architect and director of Environa Studio, presented his views on how some current perceptions of sustainability are flawed. He captivated the audience by introducing concepts of thermal mass, ventilation, efficient space design, orientation, integration of indoor and outdoor spaces, roof design and rainwater collection.

Later in the programme further clarification was gained on the proposed amendments to the BCA and the revised Bushfire Standards and how they will impact not just on Lidco but the entire window industry. At Lidco we view these changes as opportunities to further enhance our product offering and support our growing fabricator network.

The conference was not only thought provoking but challenging as we move towards major changes in the building codes.





# FABRICATOR PROFILE

## TOTAL VISION

Total Vision Glass & Aluminium, in Forster Tuncurry, can do it all. Along with building a formidable reputation in it's local area for superior workmanship, witnessed in these photos, they have also kept a steady stream of repeat customers due to their excellent customer service; just read some of the feedback:

"Total Vision is the most helpful business that I have ever dealt with. They could not do more to help me. Since I first dealt with them for a very small fixup job, I use them time and time again now. The staff are so professional and helpful. I highly recommend this business."

Not content with just resting on these laurels they also provide 24 hour emergency glass replacement, security doors & grilles and have developed a famous housewash suitable for a variety of different applications.

Luckily for people outside of the Foster Tuncurry region Nathan Longfeld and his team are happy to travel for their work too.

You can contact Total Vision on 6554 7440 or visit their website:  
[totalvisionglass.com.au](http://totalvisionglass.com.au)

"Total Vision is the most helpful business that I have ever dealt with... I highly recommend this business."

- happy customer



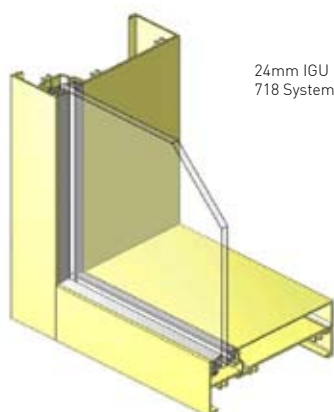
# TECH TALK

By Stewart Silk  
Principal Designer

The Lidco 718 System is one of our most versatile and cost effective framing suites, being used as a substitute when the 100mm framing suite is deemed too light and the 150mm suites too big and expensive. It has been extensively used in a many high rise apartments and in some of the most climatically challenging locations in Australia.

The 718 System is a 125mm deep face-glazed shopfront, but with added sections and incorporating stack joint technology and starter mullions so that it can be used as a Curtain Wall Panel System for low to mid range buildings.

A useful addition to this (and other Lidco commercial framing systems) is Lidco's 50mm commercial awning system.

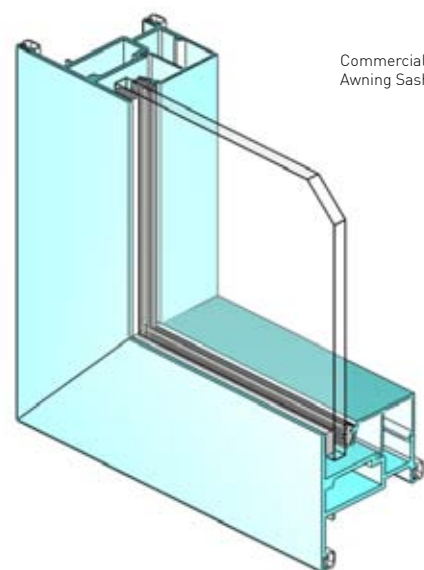
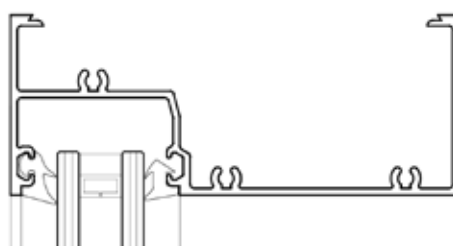
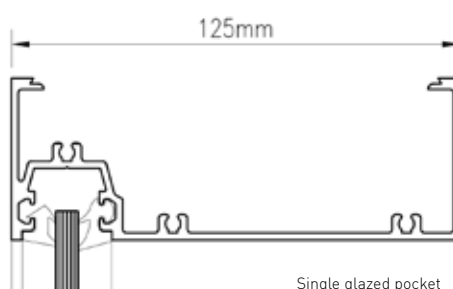
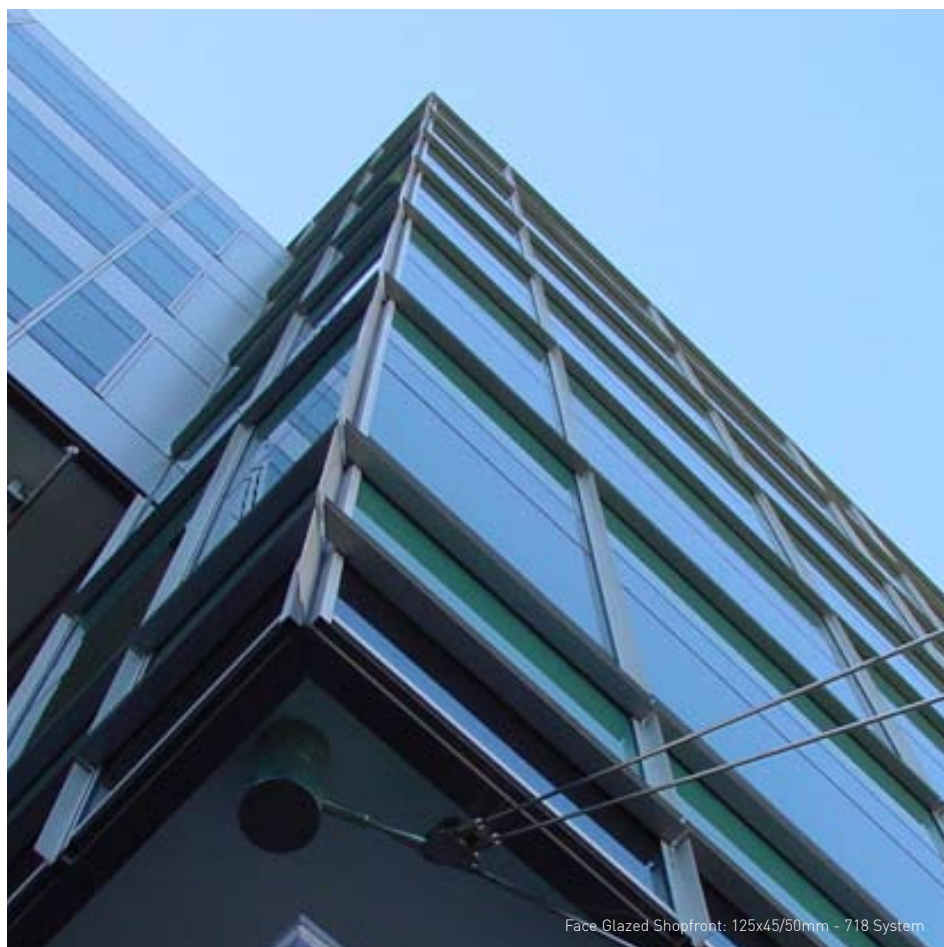


It is ideally suited when architects require operable sashes for ventilation, an important feature that is becoming increasingly useful when striving to achieve energy saving solutions.

When sliding doors are required, Lidco's 125mm stacking sliding doors (360 System) perfectly couple up to the 718 framing suite.

The 718 System has the option of either being glazed on inside or the outside and is now available in a double glazed version that can accommodate up to 25mm IGU's (double glazing units).

All of Lidco's framing suites can be supplied with sub-heads to cater for slab deflections and sub-sill sections for drainage and all of these options now give architects and designers the opportunity to be even more creative in the design process.





# NEW ENERGY RATINGS

## Understanding IGUs

Global warming has become a more prominent feature in social and political discussion. Back in July 2000 the Australian Government announced it reached an agreement with industry and State and Territory Governments to adopt a two-pronged approach to reducing greenhouse gas emissions from buildings.

The first approach was the introduction of mandatory minimum energy performance requirements through the Building Code of Australia (BCA), and the second approach was the encouragement of best practice voluntary initiatives by industry.

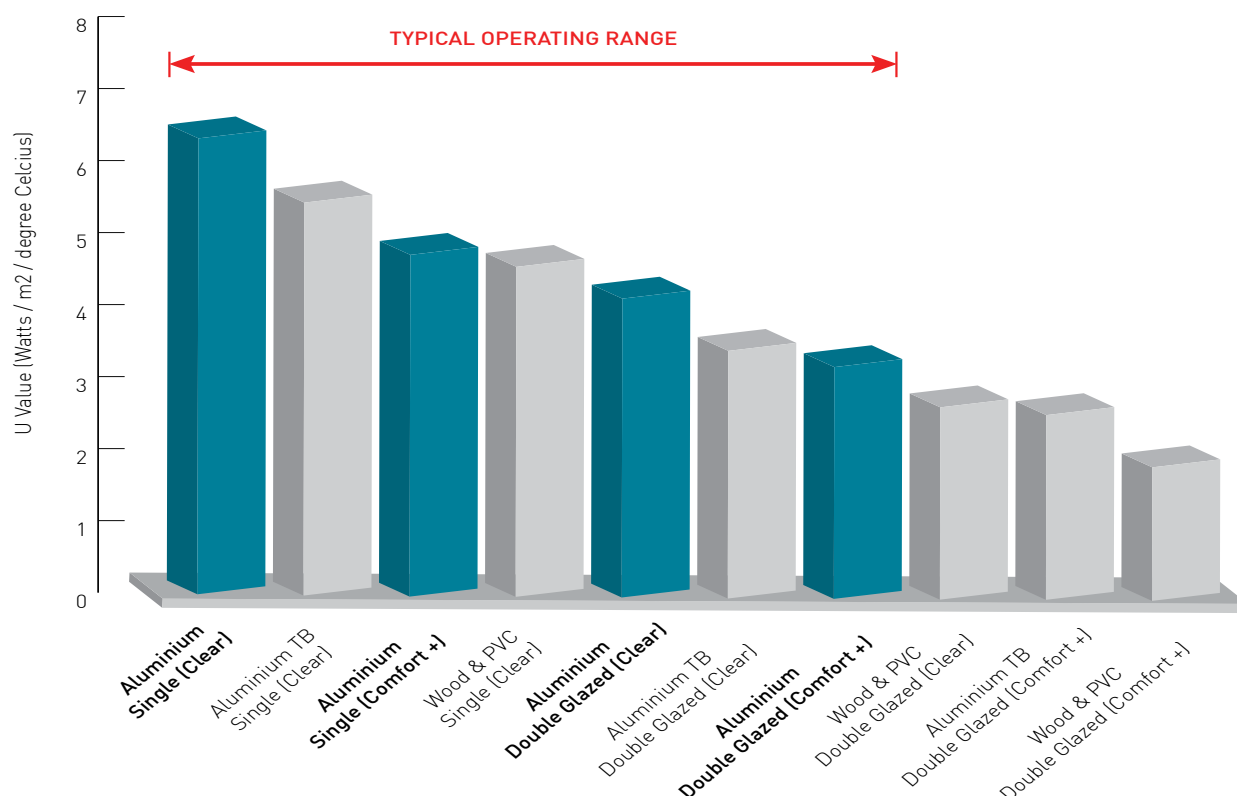
On 30 April 2009, the Council of Australian Governments (COAG) announced that it would request the Australian Building Codes Board (ABCB) to increase the energy efficiency provisions in the 2010 edition of the BCA.

In brief, COAG requested the ABCB to increase the energy efficiency provisions so that the 2010 BCA requires a 6 star energy rating, or equivalent, for new residential buildings and a significant increase in the energy efficiency requirements for all new commercial buildings.

Traditionally the housing energy efficiency building codes in Australia have lacked recognition of the insulation properties of windows, and have concentrated on providing minimum thermal resistance values (R Values) for the roof, floor and walls only.

The new code will now include window and, as such, will play an important role in achieving these higher standards. Aluminium, in conjunction with better and improved glazing options, will continue to be the material of choice and we will see an increasing use of intelligent glazing solutions, including low E type glass both in single glazed and double glazed, in both residential and commercial applications.

These glazing alternatives will avoid the immediate need to consider more expensive framing solutions, particularly thermally broken aluminium and plastic (uPVC). The accompanying chart shows the dramatic reduction of up to 50% in the all important U Values when better glazing options are used with aluminium frames. These improvements will play an vital role in helping designers achieve higher energy ratings for the overall building envelope at sensible costs.



In addition to optimising the U value there are two other factors that will need consideration- the solar heat gain coefficient (SHGC) and visible transmission (VT). The ideal values will depend on whether the building is located in either hot or cold climates. In selecting glazing options there are a number of options that can be considered:

**Tint:** While clear glass is the most commonly used glass, tinted glass may be used to reduce solar heat gain or as an architectural feature. The principle colors available include bronze, grey and green. The degree of tint depends on both the composition and thickness of the glass. Where IGU's are used tinted glass is usually placed on the exterior pane.

**Coated glass:** The heat and sound insulation of glazing may also be improved by the use of a film or coating applied to its surface. This film is typically made of polyester or metal, and may give the window a reflective appearance or a one-way mirror effect.

**Low emissive glass:** Low-E glass has a thin coating, often of metal, on the glass within its airspace that reflects thermal radiation or inhibits its emission reducing heat transfer through the glass. A basic low-e coating allows solar radiation to pass through into a room. Thus, the coating helps to reduce heat loss but allows the room to be warmed by direct sunshine. Low-e glass reflects the radiation rather than absorbing it improving performance compared to the glass in a simple greenhouse. Its effect can be noticed by an increase in temperature of the inside glass surface and the reduction of condensation that would normally form on the unit because of a change in the dew point.

In conclusion, glass selection will increasingly play a determining role in providing solutions to designers to the new BCA requirements. The vast number of glazing alternatives together with existing aluminium framing means that they can happily continue to specify aluminium when designing their next project. Better still if they specify Lidco Architectural Framing systems!

## How IGUs Work

Clear monolithic glass accounts for less than 5% of a window's insulation value, the rest being supplied by the still air layers of the environment on either side of the glass. Since the heat flow resistance of still air is much greater than that of glass, a glass unit made of two panes enclosing an air space will have about twice the insulation value of a single pane window (half the heat loss).

Double glazed units are called Insulating Glass Units as they provide insulation to the windows of a building, like fibre-glass insulation provides insulation to the wall.

## Benefits of IGUs

- ▲ Reduce heat loss.
- ▲ Save energy.
- ▲ Reduce condensation.
- ▲ Increase comfort.
- ▲ Reduce noise.
- ▲ Reduce heat gain.
- ▲ Reduce glare.
- ▲ Reduce fading.
- ▲ Increase security.

Insulating Glass Units retain much more heat in a room during winter reducing heat loss and saving energy.



# WHO WE ARE

With 63 years experience in the architectural building industry, Lidco is one of Australia's market leaders in the development, commercialisation and distribution of architectural framing systems.

Lidco's extensive range of architectural framing systems provide a solution for each and every residential and commercial building project. From a small residential dwelling extension to a multistory building there is a Lidco system to suit. The Lidco range includes windows, doors, louvre systems, commercial glazing systems and unitised curtain walls.

Our Product Range Includes:

- \* Window Systems
- \* Door Systems
- \* Shopfront Systems
- \* Curtain Wall Systems & Façade Engineering
- \* Custom Extrusion Die Development
- \* Supply of building related hardware products
- \* Adjustable + Fixed Louvre Systems



Cover Image:  
Total Vision Glass  
Custom Built Skylight utilising  
glazing base/ cap & clamp bar  
Forster, NSW

## HEAD OFFICE

Lidco Architectural Framing Systems \* 191 Botany Road, NSW 2015 Australia  
T 1300 663 848 [www.lidco.com.au](http://www.lidco.com.au)

All images supplied are owned by Lidco Corporation Pty Ltd.