

INSTALLING FRAMES CORRECTLY

- 1 Fit flashing to window surround as required.
- 2 Measure the frame opening to ensure that there is sufficient room for the product and additional packing.

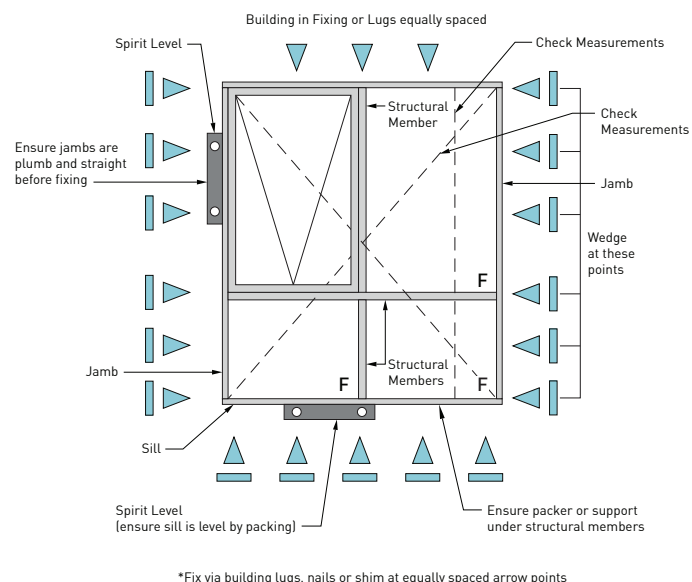
Stud Opening:

Height=O/A reveal size + adequate clearance

Width=O/A reveal size + adequate clearance

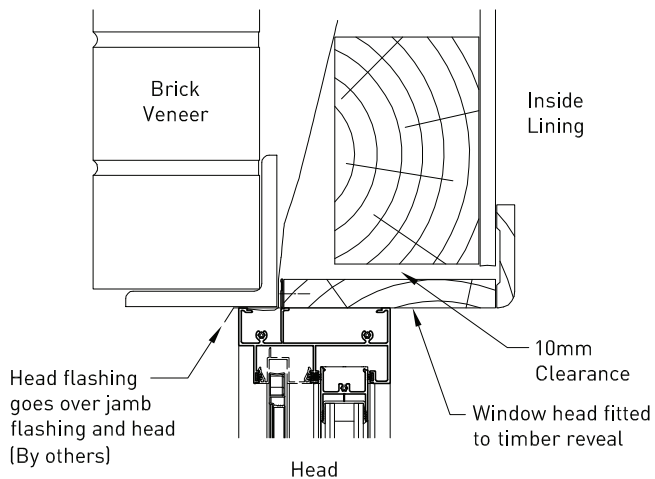
Note: Clearance dimensions vary between framing system. For adequate clearance refer to the window system documentation.

- 3 Frame must be packed plumb, square and not twisted between the openings. Ensure the sill is fully supported; failure to do so may result in sill roll on sliding windows. Sills on all windows and doors must be straight and level and should be packed and secured.
- 4 Secure aluminium windows by nailing through reveal in brick veneer applications. Timber windows should be secured by back nailing through stud, not face of frame stud. Alternatively, on cavity brick construction use galvanized building lugs located at 450mm maximum centres.
- 5 If it is not possible to backnail, wedges should be installed between the window and the building frame to prevent opening of the frame joints when nailing is carried out.
- 6 Keep sashes closed whilst installing frames.
- 7 Sill bricks should be at least 10mm clear of window frame to allow settlement in brick veneer construction.
- 8 Do not stand on the windows or doors, or use them as a support for scaffolding, or slide material through the frame. It is important to prevent any damage to windows and doors during construction.
- 9 Do not permit weight of eaves or arch bars to bear on any window or door frame (windows and doors are not load bearing).
- 10 Remove cement mortar and plaster droppings from windows immediately, taking care to avoid scratching glass and, or frames, as permanent damage can result. Immediate attention must be given by washing off with water before material sets.
- 11 To ensure the satisfactory long term performance of sliding doors, the sill should be fully supported. Where the sill projects during construction the sill should be fully supported with temporary supports until sill bricks or tiles are installed.



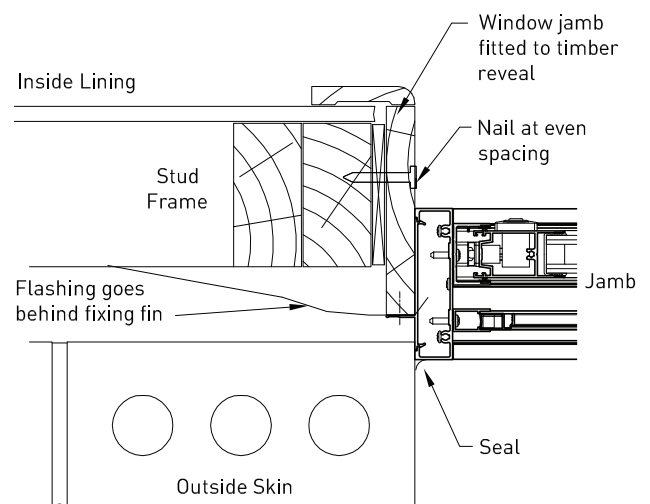
Building-In Details

Brick Veneer Applications

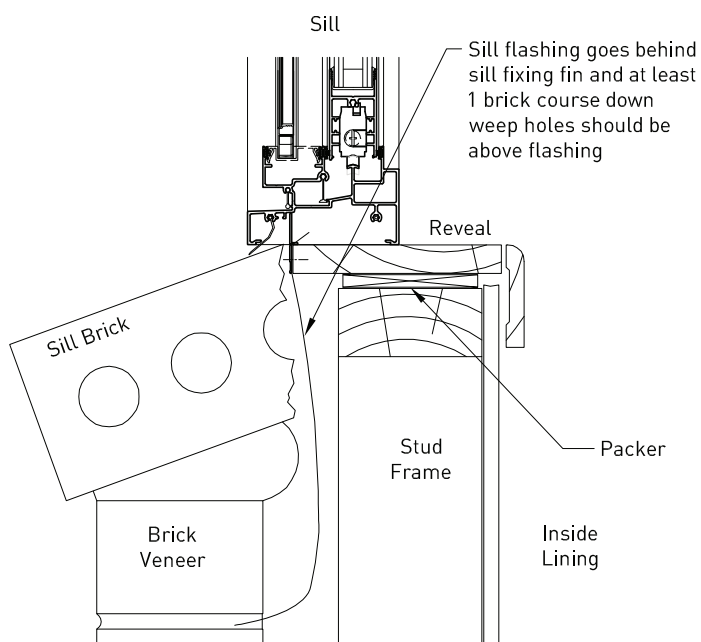


Brick Veneer Head

IMPORTANT: Ensure building loads do not bear on window



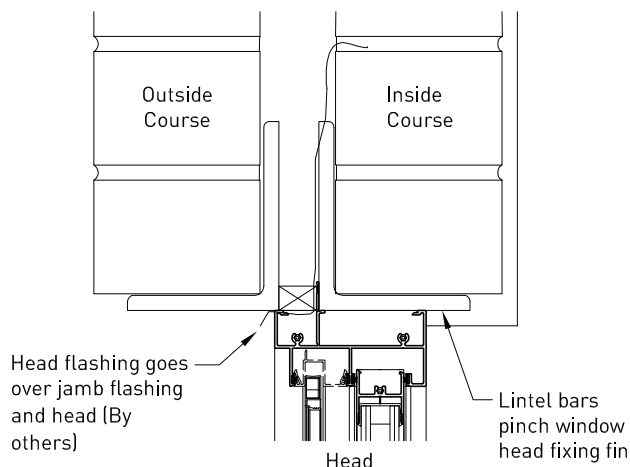
Brick Veneer Jamb



Brick Veneer Sill

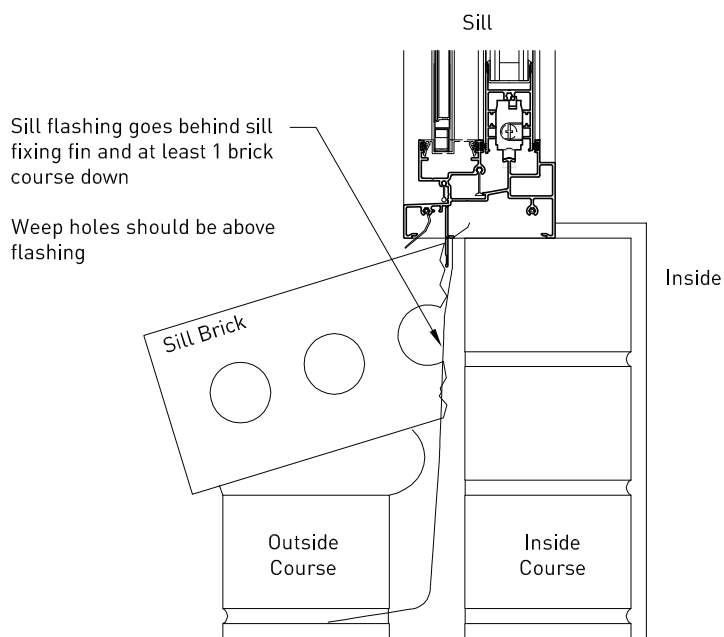
Building-In Details

Cavity Brick Applications

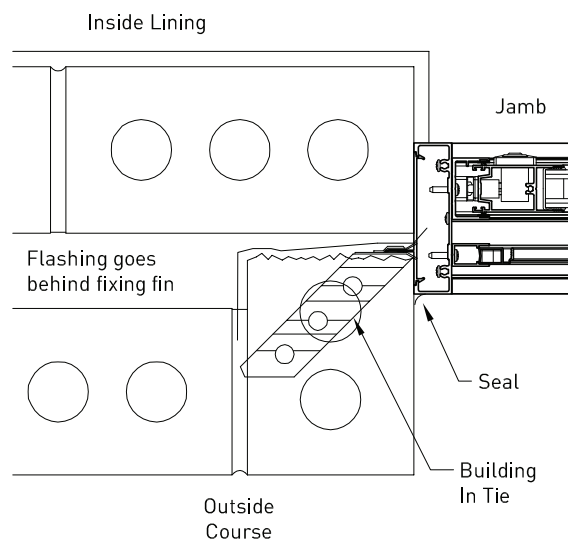


Cavity Brick Head

IMPORTANT: Ensure building loads do not bear on window



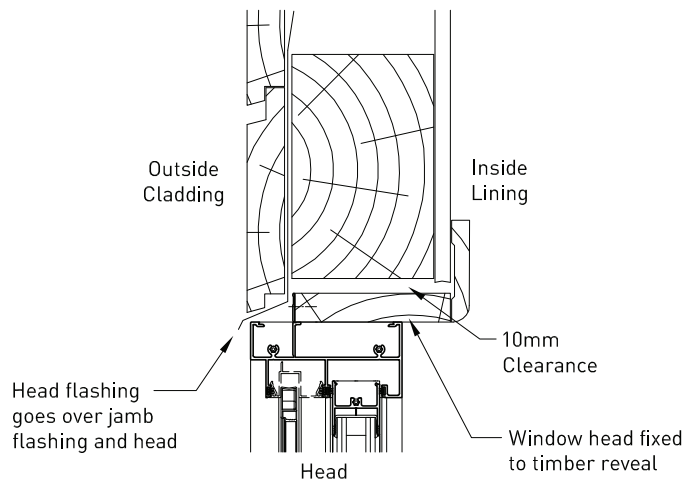
Cavity Brick Sill



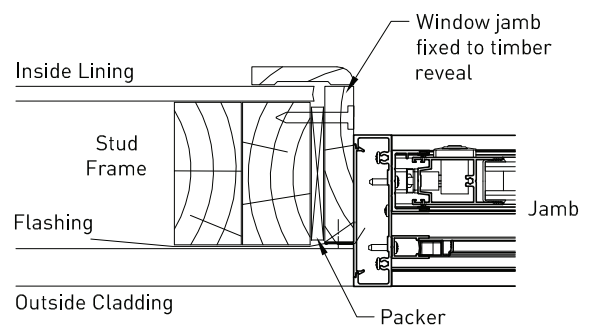
Cavity Brick Jamb

Building-In Details

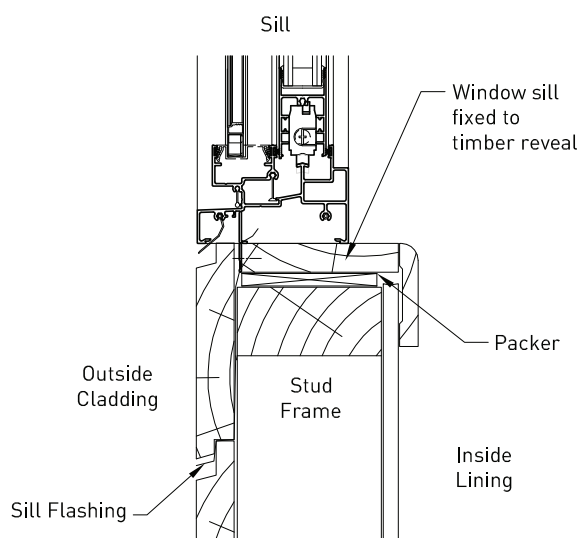
Timber Frame Applications



Timber Frame Head



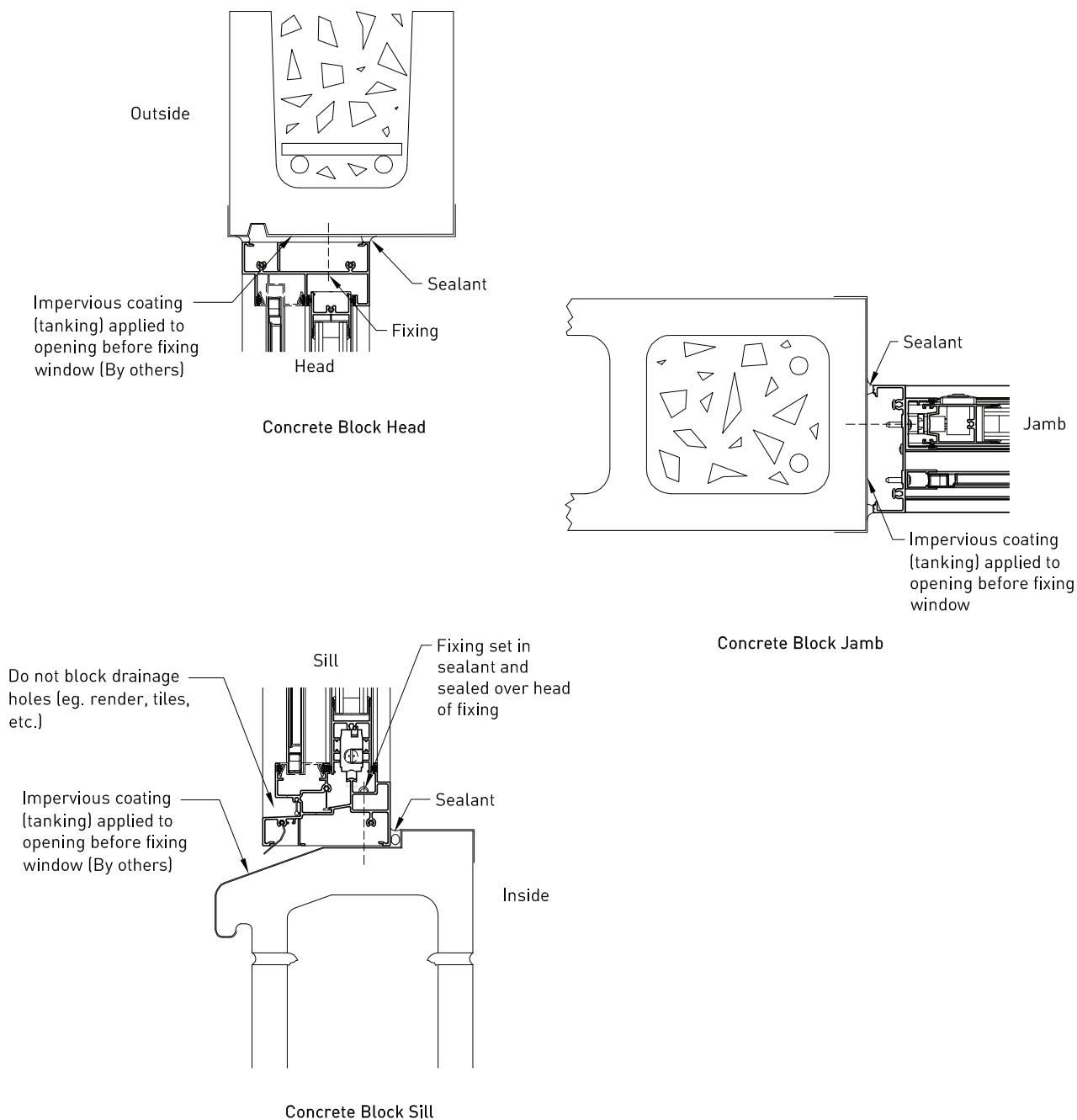
Timber Frame Jamb



Timber Frame Sill

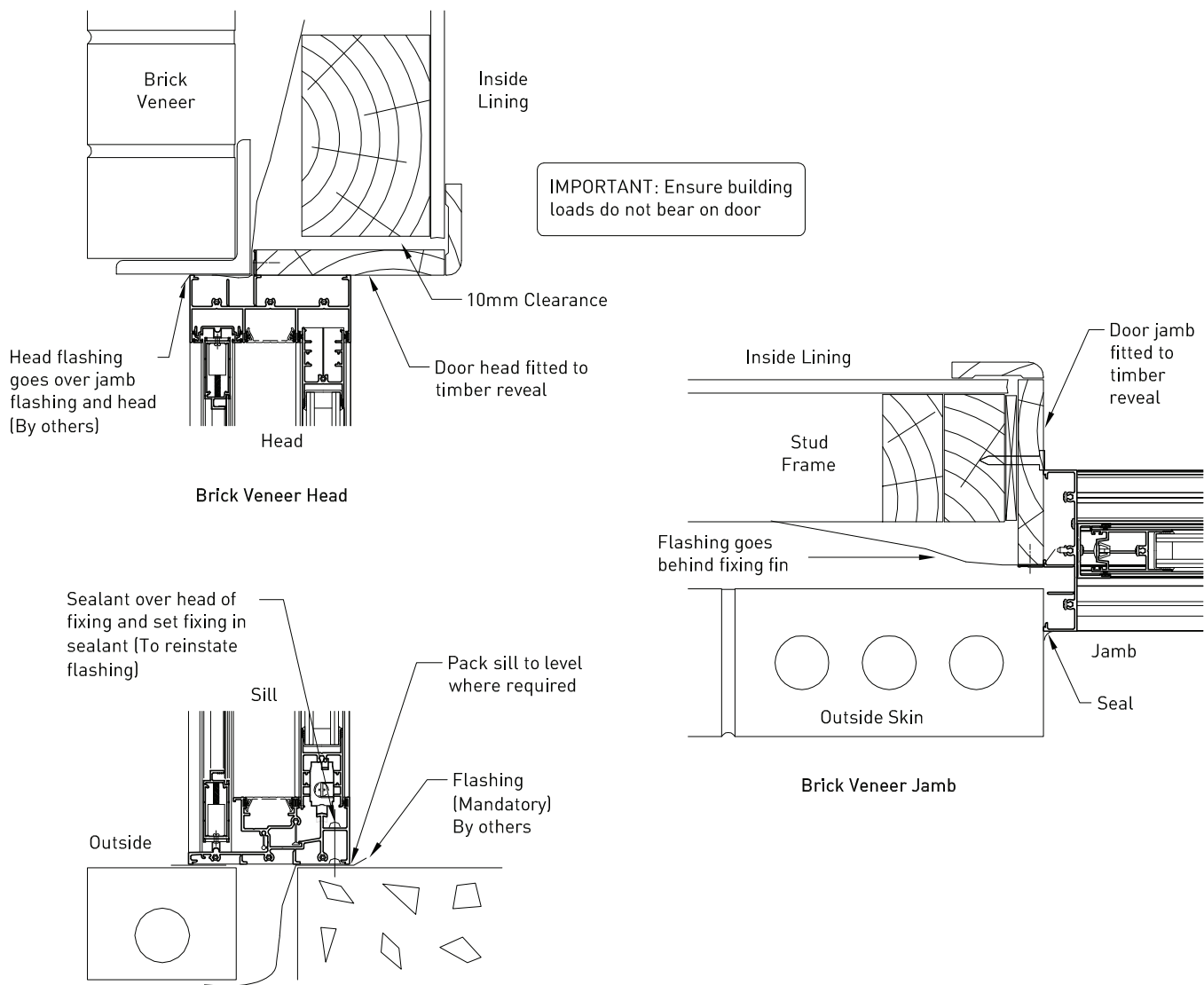
Building-In Details

Concrete Block Applications



Building-In Details

Brick Veneer Applications



IMPORTANT:

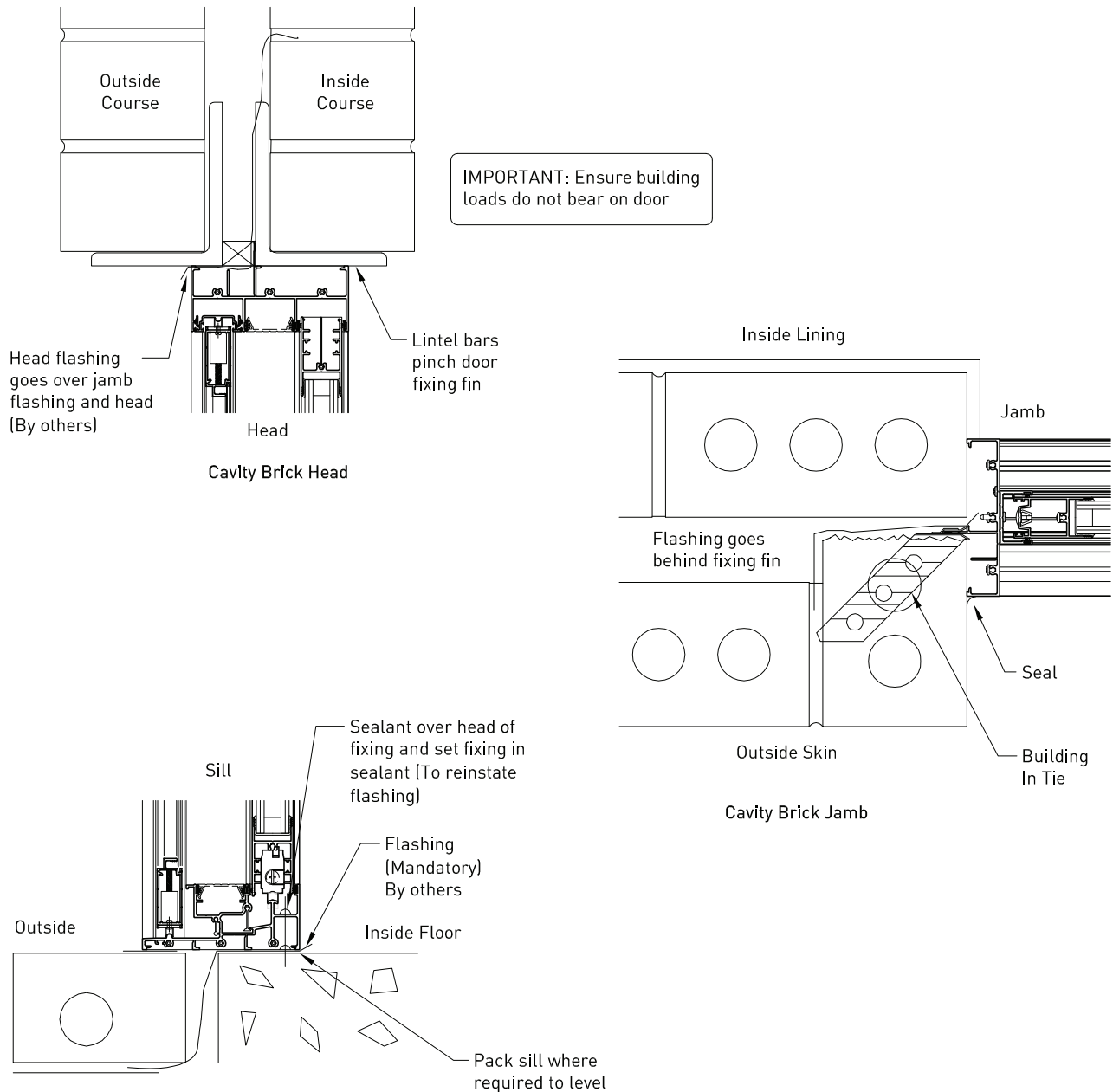
Separate the sill and outside brick skin with an isolator to prevent possible reaction between brick/mortar and the aluminium framing which can lead to extensive corrosion.

Sill must be level side to side and front to back, and fully supported at all times

Brick Veneer Sill

Building-In Details

Cavity Brick Applications



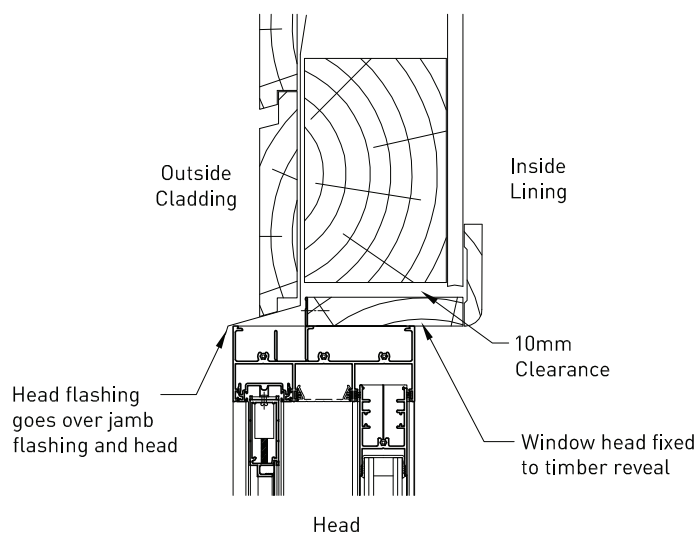
IMPORTANT:
Separate the sill and outside brick skin with an isolator to prevent possible reaction between brick/mortar and the aluminium framing which can lead to extensive corrosion.

Sill must be level side to side and front to back, and fully supported at all times

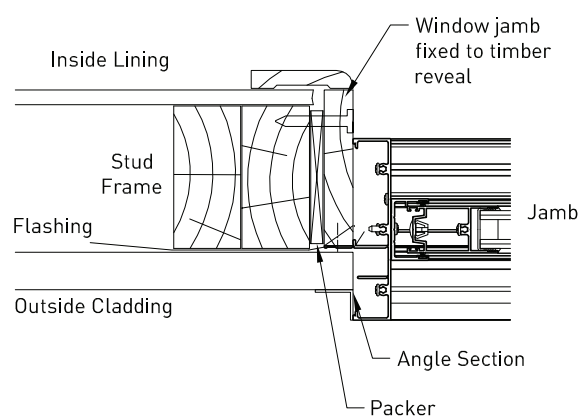
Cavity Brick Sill

Building-In Details

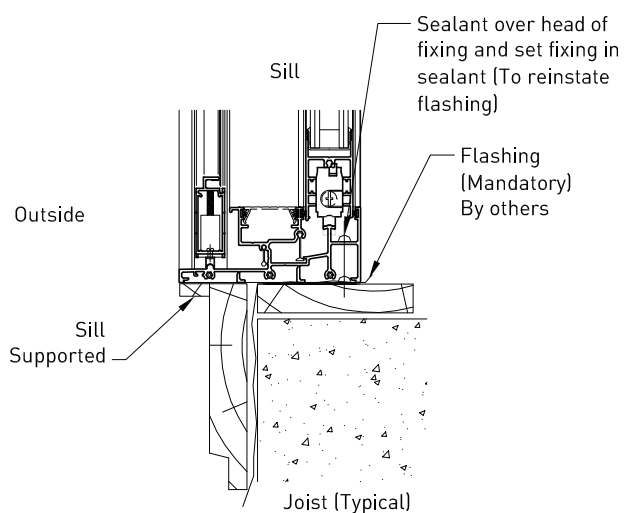
Timber Frame Applications



Timber Frame Head



Timber Frame Jamb



Timber Frame Sill

Building-In Details

Concrete Block Applications

