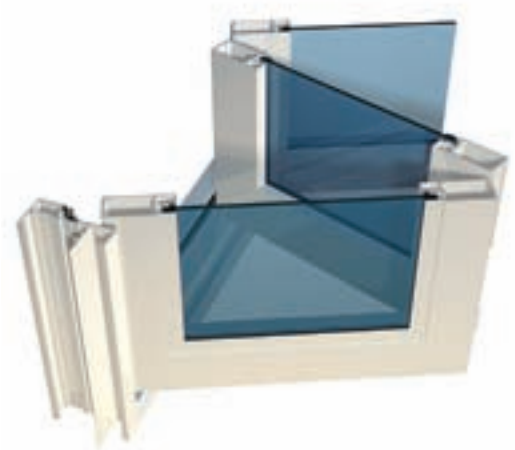


## Overview

Bifold doors are a great alternative to sliding doors as the door panels fold back out of the way allowing obstruction-free access and uninterrupted views. The panels can be manufactured to open either inward or outward. The Lifestyle™ Bifold Door is ideal for residential and commercial applications, including courtyards, balconies, room dividers, cafes and restaurants. The panel height can be up to 2.5m and numerous panel configurations fit within a 100mm frame. High water performance and thermal efficiency are other highlights of this excellent bifold system. A range of retractable screening systems can be easily fitted.

Careful attention to the design of the seals fitted to the sash and frame results in excellent water, thermal and air infiltration properties. The intermediate panels can be secured either by top and bottom flush bolts or with the convenient Sorrento multi-point lock system operated using a single low profile mid-height handle. The door can accept both single and double glazing.



## Features

- High precision fully adjustable top rollers support the folding panels ensuring that the track is clean and easy to operate
- Suitable for exposed locations due to the unique use of sash and perimeter frame seals and choice of high quality Centor E2 Eclipse bifold hardware
- Can incorporate a single panel hinged door allowing daily access without having to completely open the bifold system
- The 100mm frame allows for numerous sidelight options using an extensive range of Lidco's fixed panel framing systems and window systems, including the Klimat Lanai Louvre™
- Unique jamb pivots are designed for easy adjustment of doors horizontally and vertically without having to remove the door panels
- In areas protected from the weather the sill track can be replaced with a floor guide set into the floor
- The active door can be fitted with the Sorrento mortise lock having a two stage bolt for added security and incorporating nylon slides for a smooth, quiet action

Maximum Panel Height	2500mm
Maximum Panel Width	800mm
Maximum Glass Thickness	≤22mm IGU



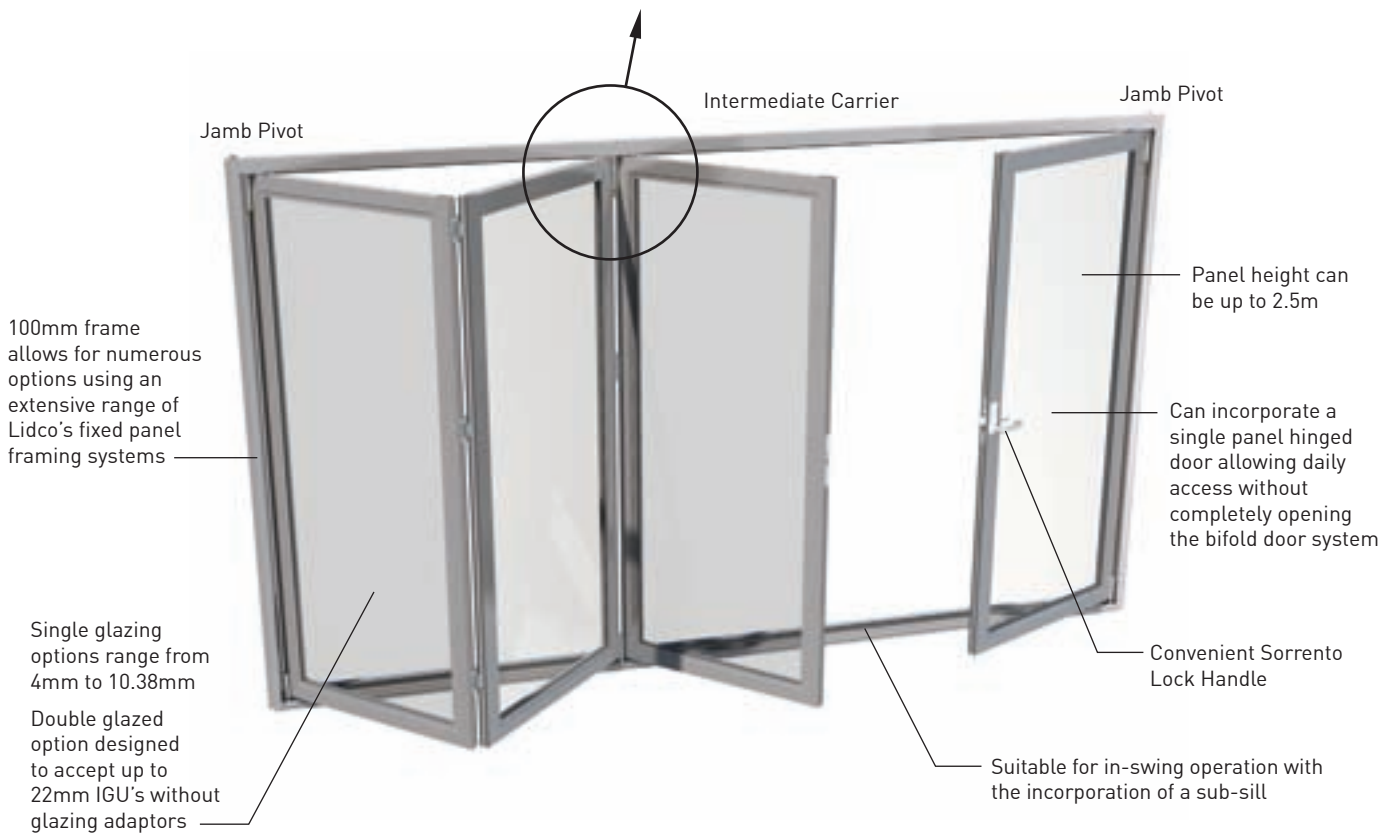
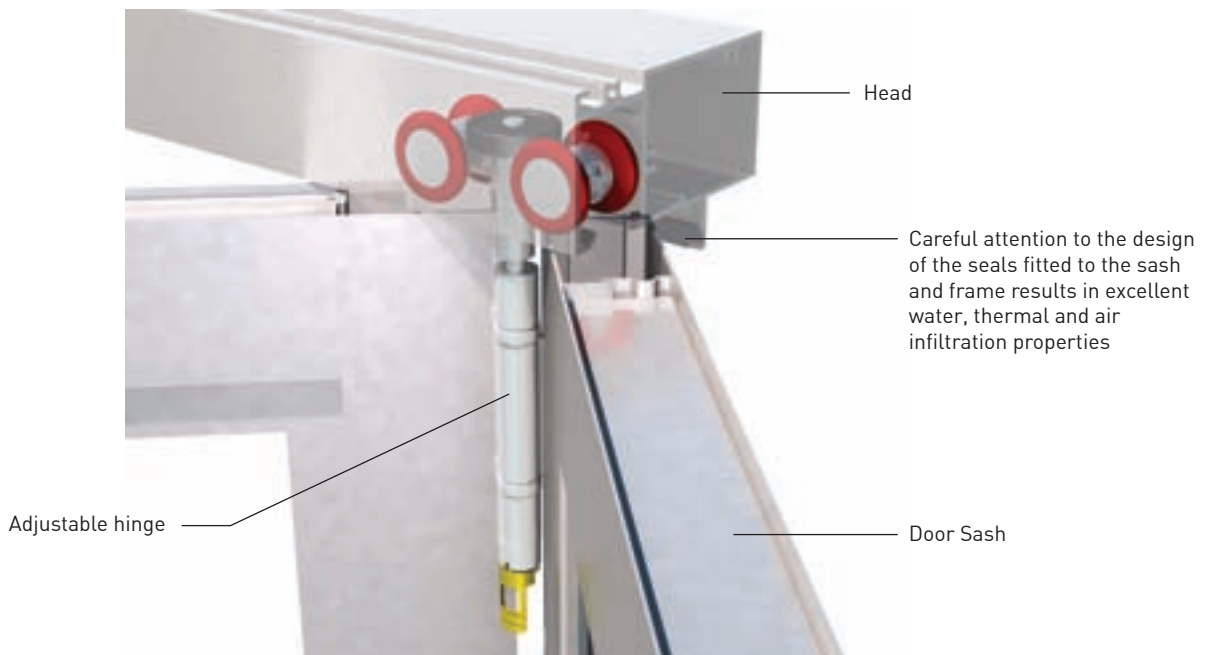
\*Standard sill used

Design Performance	
Serviceability Wind Pressure	1000Pa
Overall Classification	N3



- An interior snib lever is provided for quick and convenient locking with the need for a key
- The intermediate panels can be secured either by top and bottom flush bolts or the convenient Sorrento multipoint lock system operated using a single low profile mid-height handle
- Optional applied colonial bars for 'Heritage' look

**Intermediate Carrier Detail**



## Sorrento Lock and Handle

The new Sorrento mortise lock and handle is compatible for use with the Lifestyle™ Hinged Door (150 System) and Lifestyle™ Bifold Door (615 System). This reliable lock set has a beveled latch bolt that is extended further into the strike plate when locked by key or snib.

The Sorrento lock set may be connected to a multi-point kit to provide remote locking and door seal compression. The working lock is face mounted in order to simplify fitting to the door stile.

### Features

- Interior snib lever for quick and convenient locking without the need for a key
- Tough nylon slides on the lock bolt to protect the edge of the door jamb, reducing noise and providing a smooth closing action
- Two-stage lock bolt – locking the door by key or snib lever causes the lock bolt to extend further into the strike plate
- Steel cased lock body for increased strength
- Australian design and manufacture
- Quick lever reversal by loosening a screw (to change between left hand hinged and right hand hinged doors)
- Interchangeable lock bolt can be easily swapped to suit both inward opening and outward opening doors
- Available in black satin, satin chrome, and a range of powder coated finishes\*



Lock and Handle






Multi-Point Kit

- Additional finishes available that are suitable for coastal and high humidity environments
- Can be keyed alike\*

### Sorrento Multi-Point Kit

- An upper and lower remote bolt actuated by operation of the door levers to provide positive locking and door sealing
- Actuation of the remote bolts to lock the door causes the door seals to be compressed
- 15mm bolt throw each end
- Adjustable metal bolt tips
- Easy installation using a patented system that guides the rods onto the centre lock, and the tubes can be cut to length on site to fit any door size

	Description	Part Number	Colour
	Sorrento Lock Set Kit (Face Mount)  For 150 and 615 Systems Can be supplied keyed alike*	15-500BL	Black Satin
		15-500SC	Satin Chrome
		15-500PR*	Primrose
		15-500CC*	Custom Colour
	Sorrento Inactive Lock Body with Lever (Face Mount)  For 150 and 615 Systems Can be supplied keyed alike*	15-501BL	Black Satin
		15-501SC	Satin Chrome
		15-501PR*	Primrose
		15-501CC*	Custom Colour
	Sorrento Twin Bolt for Bifold with Low Profile Handle  For 150 and 615 Systems	15-502BL	Black Satin
		15-502SC	Satin Chrome
		15-502PR*	Primrose
		15-502CC*	Custom Colour

\*Lead times may apply

## How to Specify

- Aluminium frames to be manufactured using Lidco 615 System: Lifestyle™ Bifold Door
- Selected framing to be engineered, manufactured and installed in accordance with: AS 2047-2048 (Windows in Buildings), AS/NZS 1170 (Loading Code), AS/NZS 1664 (Aluminium Structures Code)
- Selected glazing to be in line with performance requirements as set out in AS 1288 (Glass in Buildings)
- Size limitations are governed by design intent, glass selection and local wind load and deflection requirements
- Refer to hardware selection guide for compatible options



For any specification assistance please call to speak to one of our friendly and knowledgeable technical sales team on 1300 663 848 or email [techsupport@lidco.com.au](mailto:techsupport@lidco.com.au)



615 System Specifier Guide, CAD, PDF files and more are available at [www.lidco.com.au](http://www.lidco.com.au)

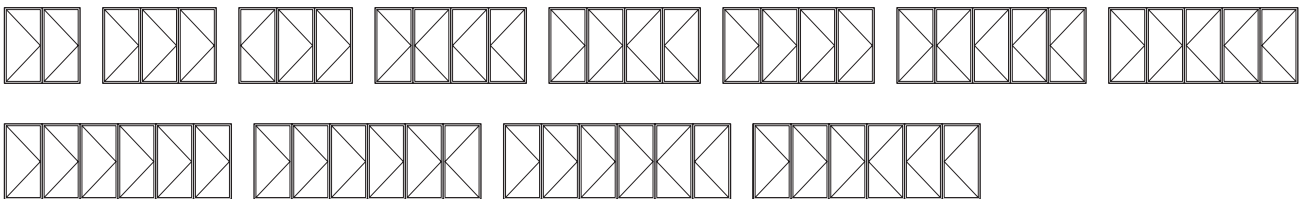
## WERS Energy Ratings



Glazing	Cooling	Heating	Uw*	SHGC*	Tvw*	Air Inf.
5mm Clear	26%	15%	6.2	0.60	0.62	0.21
6mm Clear	26%	15%	6.2	0.60	0.62	0.21
6.38mm ComfortPlus	51%	24%	4.7	0.37	0.41	0.21
5mm Clear / 8mm Air / 5mm EA	46%	41%	3.8	0.50	0.52	0.21
6.38mm Lam / 10mm Ar / 6.38mm CPCLr	49%	45%	3.4	0.49	0.52	0.21

\*Notes: **Uw** is the whole window U-value, **SHGC** is the whole window solar heat gain coefficient  
**Tvw** is the whole window visible (light) transmittance  
 More energy ratings available at [www.lidco.com.au/energy-ratings](http://www.lidco.com.au/energy-ratings)

## Typical Configurations



Lidco Corporation Pty Ltd  
 T 1300 663 848  
[techsupport@lidco.com.au](mailto:techsupport@lidco.com.au)  
[www.lidco.com.au](http://www.lidco.com.au)

Founded in Australia over 65 years ago Lidco is a leading designer and supplier of contemporary and high performance residential and commercial aluminium window and door systems

© 2013 Lidco Corporation Pty Ltd

Your nearest supplier: